

Adopt a Project

Montgomery High School Needs YOU! The dire state and local budget situations have resulted in more than \$8 million in cuts already, with another \$6 million in funding cuts expected for the 2009-10 budget. The impact on our school is tremendous. For example, our textbook budget was slashed to zero!

You can help ensure your child has critical classroom equipment, materials and programs - and an attractive, welcoming campus - to make this a successful school year. Please write a check or donate any item listed below today! Gifts of any size are welcome. Thank you!

Teacher Projects/Training

- *Take a Walk in My Shoes* acclaimed student writing project: \$3,840 (partial support welcome!)
- AVID training to support 1st generation college students: \$400 per teacher
- TeacherWeb - sponsor one teacher to use this valuable Web site: \$39

Classroom Equipment/Materials

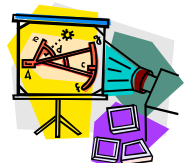
- DVD/VCR player for science classrooms: \$100 each (2)
- CD player for English students to listen to oral commentaries: \$70
- Voice recorder for IB English students to record oral commentaries: \$50
- Weather station: \$50
- Class set of concave and convex lenses: \$80
- Digital microscope: \$500
- Refractive and reflective telescope: \$100
- Overhead projector and cart: \$300
- Course companion books for IB History, Math, Physics, Chemistry, Biology: \$33
- English-Spanish dictionaries: 10 for \$60
- Spanish DVDs and activity packets: \$14.95 each

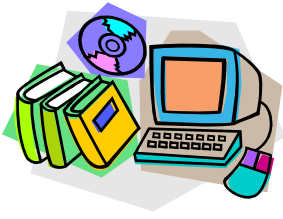
To donate:

- Write a check to Montgomery Education Foundation, 1250 Hahman Dr., SR, 95405
- Email mef@montgomeryhigheducationfoundation.org
- Call Principal Laurie Fong at (707) 528-5512.



Additional Projects on Reverse Side





Adopt a Project

Food and Beverages

- Pastries, cookies, hot chocolate or other treats to reward semester honor roll students (enough food or drink for 1,000 students). October, January, March.
- Pizza & cookies for 30 students for after-school study sessions for AP & IB exams.

Student Health and Wellness

- Liquid hand sanitizer - we can use as many bottles as you can donate!
- Antibacterial wipes
- Boxes of tissues
- Jump ropes - 20

Campus Beautification

- Mulch for planters
- 8' plastic utility tables, 4 for \$479 at Costco. 15 are needed - the tables in our lunchroom are older than our students!
- Outdoor metal picnic tables with attached benches: \$1,200

Supplies

- 3x5 cards
- HP 92A black laser toner cartridges (model C4092A): \$69.99
- Epson CX6000 color printer cartridges: \$23.99

Vocational Education & Special Education

- Bus passes: \$40 per book
- A working lawn mower and weed eater
- Any garden supplies, tools, gloves
- Refrigerator, dishwasher, vacuum

To donate:

- Write a check to Montgomery Education Foundation, 1250 Hahman Dr., SR, 95405
- Email Liz Perez at lperez@srcs.k12.ca.us
- Call Principal Laurie Fong at (707) 528-5512.

